

Data Sheet

Recommended Application: Universal

Lighting
540

Type Designation 540
 Designation IEC 4R25-2
 System Zn-MnO₂ (Zinc Chloride)
 Shelf Life (Coding)* 2 years
 Nominal Voltage [V] 6
 Typical Capacity C [mAh] 17500 (discharge with high-resistance)
 Permissible Temperature Range - 10 °C ... 50 °C
 Housing Available in plastic or metal version
 Weight, approx. [g] 1180
 Volume [ccm] 1120

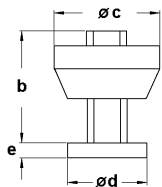
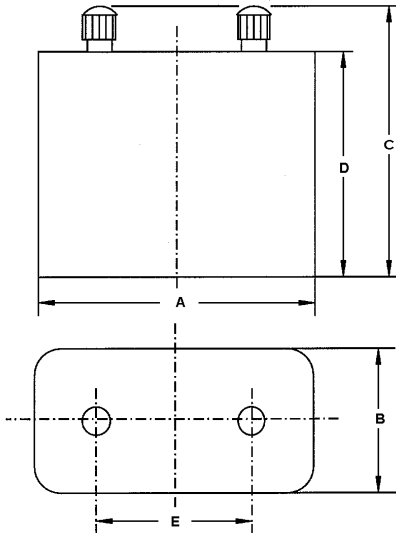
Dimensions [mm]

min: max:

A	132.5	136.5
B	69.0	73.0
C	-	127.0
D	109.5	114.0
E	75.2	77.0

Screw terminal [mm]

b min	8	or 15
c max	12	or 14
d min	7	or 12
e	2.5	
Threaded	4.2	



Typical Capacities (at 20°C)

Discharge Type	Load	End Voltage[V]	3.6
Portable Lighting 30m/d, 7d/w	8.2 Ω	Time [h]	22,7
		Capacity [Ah]	12,29
		Energy [Wh]	55,3
Discharge Type	Load	End Voltage[V]	3.6
Portable Lighting 24h/d, 7d/w	9.1 Ω	Time [min]	21,1
		Capacity [Ah]	10,37
		Energy [Wh]	47,2
Discharge Type	Load	End Voltage[V]	3.6
Road Warning Lamps 12h/d, 7d/w	110 Ω	Time [h]	374
		Capacity [Ah]	16,42
		Energy [Wh]	81,4

* In consideration of typical loss of capacity at storage and application.