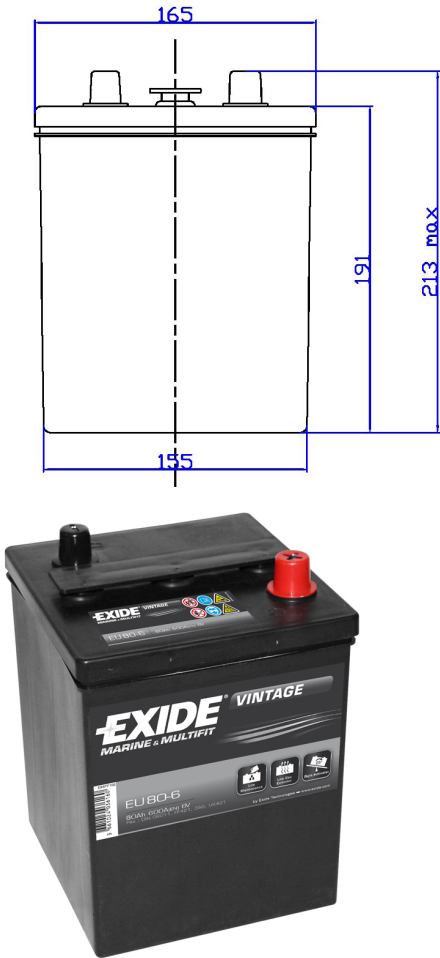
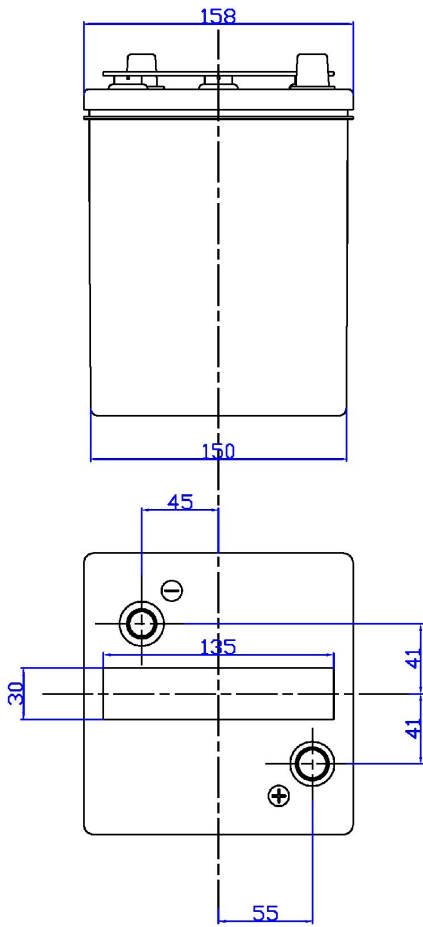


Central Article Code: M02060W01-A  
ETN Code or Other:

Created: 07/09/2005  
Modified: 18/07/2007



PERFORMANCES		
Voltage (V):	6 V	
C20 (Ah):	80.0	20 h
Rc (min):	0	
Cranking (A):	600	EN
Vibration:	V3 (35Hz/6g/20h)	
Endurance:	E2 (90 cycles@50%)	
Charge:	WET	
Technology:	Vented/Flooded	
Grid :	Hybrid	
WEIGHT AND STD. DIMENSIONS		
Battery Weight (kg):	11.02	
Volume acid (l):	2.45	
Length (mm):	158	
Width (mm):	165	
Height (mm):	220	

CONTAINER		
Type:	M02	BLACK
Hold Down:	B0	
H. D. Adapter:	No	
COVER		
Type:	Flat/Screw	BLACK
Polarity:	ETN 0	
Terminals:	EN taper post	
Terminal Adapter:	No	
SOCI:	No	
Ventilation:	Independent	
Filter:	No	
Lateral Plug:	No	
PLUGS		
Type:	3 x M27	BLACK
HANDLES		
Type:	None	
OTHERS		
Degassing Tube:	No	